



Channel 17 May 2009

Public Radio and Television for South Florida
Program WebLinks, Highlights & Activities



<http://www.pbs.org/wnet/nature/>



Kilauea: Mountain of Fire

Airs: Monday, May 4, 2009, 8:00PM-9:00PM
Thursday, May 7, 2009, 7:00PM-8:00PM
Saturday, May 9, 2009, 6:30PM-7:30PM

Kilauea's lava flows have created a fertile feeding ground for turtles just offshore. Green sea turtles are drawn here by bountiful seaweed and the black sand beaches that are a favorite basking ground. Hunting and egg harvesting nearly brought the turtles to the brink, but marine biologist George Balazs runs a conservation program that has been tagging turtles since 1978.



Frogs: The Thin Green Line

Airs: Monday, May 11, 2009, 8:00PM-9:00PM
Thursday, May 14, 2009, 7:00PM-8:00PM
Saturday, May 16, 2009, 6:30PM-7:30PM

Allison Argo, the filmmaker behind *Frogs: The Thin Green Line*, discusses the making of the film in this Web-exclusive video. From the construction of an artificial pond set, to seeing the effects of the chytrid fungus first-hand, Allison

describes the challenges she encountered in this project. With one-third of amphibian species threatened with extinction, Allison thinks the story of frogs "is probably the most important environmental story of our time."



The Loneliest Animals

Airs: Monday, May 18, 2009, 8:00PM-9:00PM
Thursday, May 21, 2009, 7:00PM-8:00PM
Saturday, May 23, 2009, 6:30PM-7:30PM

Around the globe, unique and fascinating species face extinction from hunting and habitat destruction, which affects vulnerable animals in every kind of environment. Biologists,

conservationists, wildlife preservation centers and zoological parks work to breed and shelter rare and critically endangered animals when and where they can, but many species are down to the last few individuals and face an increasingly uncertain future. For some, however, the future is all too clear. Lonesome George, a Pinta Island tortoise from the Galapagos Islands, is the very last of his kind.





Channel 17 May 2009

Public Radio and Television for South Florida

Program WebLinks, Highlights & Activities



Eagles of Mull

Airs: Monday, May 25, 2009, 8:00PM-9:00PM

Thursday, May 28, 2009, 7:00PM-8:00PM

For filmmaker Gordon Buchanan, it takes more than growing up in a place to truly appreciate its beauty. It takes coming home again. Born and raised on the Isle of Mull off the west coast of Scotland, Buchanan set off when he was 17 years old in pursuit of his dream of filming the animals and natural settings of faraway places. But presented with an opportunity to return home after 15 years abroad to film the wildlife on Mull, he was happy for the chance to take a new look at his native land, through his camera lens. In the process, he found more admiration for it than ever before. The Isle of Mull is the fourth largest Scottish island, and its 300-mile coastline supports a wide range of species. Although animals such as otters, seals and dolphins are often seen there, the island is most famous for its eagles. The golden eagle, one of the most familiar birds of the region, presents a magnificent display of colorful plumage and powerful features

For Educators: <http://www.pbs.org/wnet/nature/educators.html>



NOVA is the highest rated science series on television and the most watched documentary series on public television. It is also one of television's most acclaimed series.



Mystery of the Megavolcano

Airs: Monday, May 4, 2009, 11:00PM-12:00AM

Researchers from Indonesia to Greenland unearth clues to the greatest volcanic eruption of the last 100,000 years.

Doctor's Diaries



Part 1 Airs: Thursday, May 7, 2009, 8:00PM-9:00PM

Monday, May 11, 2009, 11:00PM-12:00AM

Part 2 Airs: Thursday, May 14, 2009, 8:00PM-9:00PM

Monday, May 18, 2009, 11:00PM-12:00AM

In 1987, NOVA's cameras began rolling to chronicle the lives of seven young, bright medical students embarking on the longest and most rigorous endeavor in higher education: the years-long journey to become a doctor. From their first days at Harvard Medical School to the present day, none of them could have predicted what it would take, personally and professionally. In "Doctors' Diaries," a two-part special, NOVA returns to find out what sort of doctors—and people—the seven young students have become. The program is the latest installment in the longest-running U.S. documentary of its kind.

2

Contact: 305-995-1717 www.wlrn.org (Available on WLRN Education Page)





Extreme Ice

Airs: Thursday, May 21, 2009, 8:00PM-9:00PM

Monday, May 25, 2009, 11:00PM-12:00AM

Remarkable time-lapse footage by one of the world's foremost nature photographers reveals massive glaciers and ice sheets splitting apart, collapsing, and disappearing at a rate that has more and more scientists alarmed. This NOVA-National Geographic Television special investigates the latest evidence of a radically warming planet. "Extreme Ice" follows National Geographic-funded photojournalist James Balog to some of the most dangerous places on Earth as he documents the disappearance of an icy landscape that took thousands of years to form.



Last Extinction

Airs: Thursday, May 28, 2009, 8:00PM-9:00PM

Fifteen thousand years ago, North America was like the Serengeti on steroids, with mega-creatures roaming a continent teeming with incredible wildlife. But then, in a blip

of geologic time, between 15 and 35 magnificent large types of animals went extinct. In this television exclusive, NOVA joins forces with prominent scientists to test a startling hypothesis that may finally explain these sudden and widespread extinctions—that a comet broke apart in the atmosphere and devastated North America 12,900 years ago.

Teacher Resources:

<http://www.pbs.org/wgbh/nova/teachers/resources/title.html>



<http://www.pbs.org/wnet/gperf/>



King Lear

Airs: Saturday, May 2, 2009, 8:00PM-11:00PM

Sunday, May 3, 2009, 10:00PM-1:00AM

King Lear is long, complicated, and quite strange. It has also been interpreted more broadly and in more diverse ways than any other Shakespeare play. As all great art that can be endlessly appreciated,

King Lear can be explored and experienced in many ways, but not all at once. Much as one must view a great cathedral from a particular vantage point, one can only appreciate *King Lear* from some perspective or point of view—one or many. This *Lear* section of the Great Performances site provides a great deal of information about *King Lear*, and offers a variety of points of view. We cordially invite you to watch the film on PBS. After 25 March, the full film may be seen here, at Great Performances Online. We also invite you to explore the many ways in which the play can be appreciated, and contribute your own thoughts. *King Lear* may be fiction, but it offers one the richest ways we have for thinking about life.



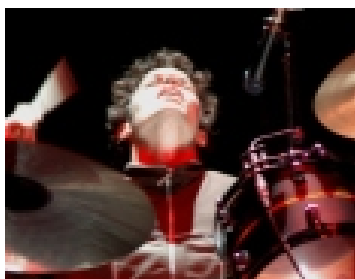
Vivere: Andrea Bocelli: Live In Tuscany

Airs: Saturday, May 9, 2009, 9:00PM-10:30PM

Italian tenor Andrea Bocelli grew up in Lajatico, a rural village in Tuscany, where his family still farms nearby. On the slopes of this ancient hill town, a special theater was constructed for a one-night-only concert of his greatest popular hits along with new songs performed to honor the occasion. Some famous musical friends dropped by and the magical result is VIVERE:

ANDREA BOCELLI LIVE IN TUSCANY. Joining Bocelli for the new songs

are "grandissimo sassofonista" Kenny G., trumpeter Chris Botti, piano virtuoso Lang Lang, Italian pop star Eliza, and legendary musician, songwriter, and producer David Foster. Helping with the hits are favorite divas Sarah Brightman, Heather Headley, and Laura Pausini.

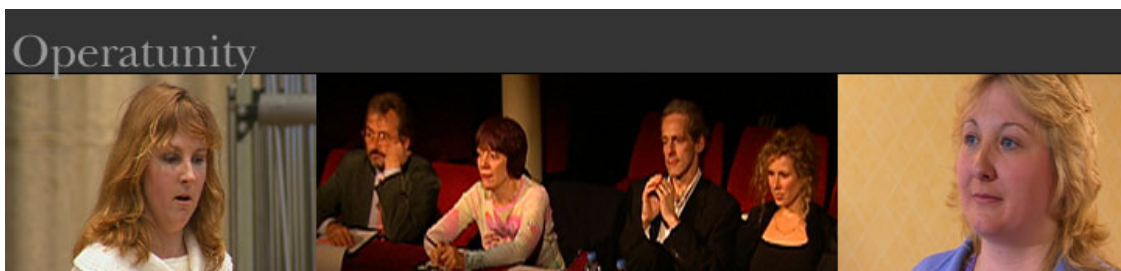


The Police Farewell Tour

Airs: Saturday, May 16, 2009, 8:00PM-9:00PM

Rocketing to stardom and worldwide fame in the early 1980s, Andy Summers, Stewart Copeland, and Sting — better known as the Police — boldly revitalized the 1970s rock 'n' roll scene with their signature fusion of punk, New Wave and reggae sounds. Despite a host of hit singles, including "Roxanne," "Message in a Bottle" and "Every Breath You Take,"

five smash albums and six Grammy Awards between 1980 and 1984, the Police parted ways in 1986, with front man Sting embarking on a successful solo career. More than two decades after the break-up and 30 years since the initial release of "Roxanne," Sting, Summers and Copeland teamed up one last time in 2007 to launch the band's farewell.



Operatunity

Airs: Wednesday, May 27, 2009, 10:30PM-12:00AM

The English National Opera took on an unprecedented challenge: it would conduct a nationwide search to find someone with no operatic experience, who could be coached to sing in [Verdi's](#) "Rigoletto" on the stage of the London Coliseum side by side with world-class performers. The result is OPERATUNITY, the compelling human story of raw talents whose operatic dreams finally meet reality.

Educational Resources: <http://www.pbs.org/wnet/gperf/education/education.html>

4
Contact: 305-995-1717 www.wlrn.org (Available on WLRN Education Page)





Examining the lives, works, and creative processes of our most outstanding cultural artists.

<http://www.pbs.org/wnet/americanmasters/about/index.html>

James Dean:

Sense Memories

Airs: Wednesday, May 6, 2009, 8:00PM-9:00PM

Dennis Stock Photographer, "There was no question that our meeting was investigatory in nature. Sparingly, Jimmy volunteered information about his background, and I elaborated on my qualifications and credentials. His awareness of my friendship with Humphrey Bogart and my membership in the elite photo agency Magnum helped to further the idea of collaboration. My intent was solely to lead the conversation back to Jimmy's past so that I could start to formulate an outline of situations that we could visit and document with the camera. The story, as I explained it, was to reveal the environments that affected and shaped the unique character of James Byron Dean."



Marilyn Monroe: Still Life

Airs: Wednesday, May 6, 2009, 9:00PM-10:00PM

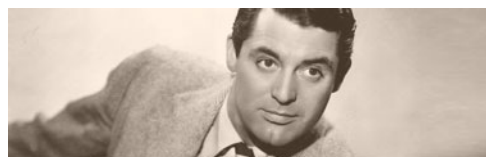
Everything from the communications revolution to multinational entertainment has altered the form of culture. Its content has been transformed by civil rights, feminism, an end to film censorship, and

much more. Nonetheless, Monroe's personal and intimate ability to inhabit our fantasies has gone right on. As I write this, she is still better known than most living movie stars, most world leaders, and most television personalities. The surprise is that she rarely has been taken seriously enough for us to ask why that is so.

Cary Grant: Class Apart

Airs: Wednesday, May 13, 2009, 8:00PM-9:30PM

Willing but not forward, Cary Grant must be the most publicly seduced male the world has known, yet he has never become a public joke--not even when Tony Curtis parodied him in "Some Like It Hot," encouraging Marilyn Monroe to rape. The little bit of shyness and reserve in Grant is pure box-office gold, and being the pursued doesn't make him seem weak or passively soft. It makes him glamorous--and, since he is not as available as other men, far more desirable.



Carol Burnett: A Woman of Character

Airs: Wednesday, May 20, 2009, 8:00PM-9:30PM

I had a good loud voice and I wasn't afraid to be goofy or zany. Those were the titles they used to give us - that goofy girl or that zany girl.





Tony Bennett: The Music Never Ends

Airs: Saturday, May 23, 2009, 8:00PM-9:30PM

have been very fortunate to have been able to make a living from what I love to do best - performing and singing for people. I am very much inspired by the great masters of entertainment: Bob Hope, George Burns, and Jimmy Durante - who never thought about retiring. When people ask me if I plan to retire, I say, "Retire to what? I am doing what I love best right now!"



<http://www.pbs.org/weta/carrier/>

Making the film *CARRIER* required 17 filmmakers to take a six-month journey aboard the aircraft carrier *USS Nimitz* during its deployment to the Gulf in support of the Iraq War. They disembarked from Coronado, California on May 7, 2005 and returned there November 8, 2005 with stops at Pearl Harbor, Hong Kong, Guam, Kuala Lumpur, Bahrain and Perth, Australia.

The trip proved an evolution for the film crew who spent the early weeks trying to find their place while the 5,000 sailors and Marines around them were too busy to take notice. Eventually, the film crew discerned the ebb and flow of life on a carrier, and began to feel more at home on board. The ship's crew not only accepted them but also took a vested interest in the project, making suggestions on the best places to film and providing access to missions that helped capture the full experience of the deployment.

Episode 8: "True Believers"

Airs: Tuesday, May 5, 2009, 10:00PM-11:00PM

This episode explores the many expressions of faith onboard the *USS Nimitz*: faith in self, faith in one's shipmates, faith in the mission of the ship and the president's call to arms. The major religious groups on board are Catholic and Protestant, but there also is a coven of Wiccans, as well as a Pentecostal group whose newest member is challenged by the duality of his beliefs and the temptations of liberty as the ship drops anchor in Perth, Australia.

Episode 9: "Get Home-itis"

Airs: Tuesday, May 12, 2009, 10:00PM-11:00PM

A six-month absence places a heavy burden on relationships. The Navy holds seminars to counsel sailors on what to expect when they return home — and how to make the transition smooth. The "Tiger Cruise" ritual allows sailors to invite their family members aboard for the last leg of the deployment.

Episode 10: "Full Circle"

Airs: Tuesday, May 19, 2009, 10:00PM-11:00PM

As the *Nimitz* makes its final transit from Hawaii to California, the sailors and Marines on board prepare to return to their homes and families. For those still on board, the "Tiger Cruise" provides a buffer, but there's no such transition for those who fly home early from Hawaii. As the *Nimitz* returns to her home port of San Diego, sailors and Marines reflect on the deployment and take stock of what they've achieved. Was the mission accomplished? There are tearful, joyful reunions at the pier.

Resources: <http://www.pbs.org/weta/carrier/resources.htm>

6
Contact: 305-995-1717 www.wlrn.org (Available on WLRN Education Page)





Channel 17 May 2009

Public Radio and Television for South Florida
Program WebLinks, Highlights & Activities



<http://www.aplaceofourown.org/>

Airs: Monday through Friday 6:00PM-6:30PM

Ask questions, share advice and participate in discussions about your child care needs.

Resources: <http://www.aplaceofourown.org/resource.php>

WLRN PBS PROGRAMS FOR CHILDREN

Educational Programming on Public Television and Online-- All the Time!

<http://wlrn.org/readytolearn/>



MARTHA SPEAKS

<http://pbskids.org/martha/>

Series Airs: Monday through Friday, 7:30AM-8:00AM and 2:00PM- 2:30PM

A family dog gains the power of speech after the letters in some alphabet soup wind up misrouted to her brain instead of her stomach in this whimsical animated series adapted from books by Susan Meddaugh.

Parents and Teachers:

<http://pbskids.org/martha/parentsteachers/index.html>

WordWorld

http://pbskids.org/wordworld/index_flash.html

Airs: Monday through Friday, 11:00AM-11:30AM

This series is a 3D animated comic adventure. WORD WORLD is a place where words come alive, words save the day and where words become a child's best friend.

Parents and Teachers: <http://pbskids.org/wordworld/parentsandteachers/index.html>



SID THE SCIENCE KID

Airs: Monday through Friday, 8:30AM-9:00AM

The Sticker Chart The series opener about an inquisitive preschooler who investigates the world around him finds Sid questioning the need for charts after he sees how far he has to go on his chore chart to receive a promised toy rocket.

Parent and Teacher Resource: <http://pbskids.org>

